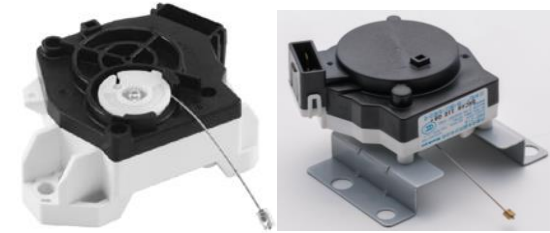


Mechanical Units NTCU

NTCU



PDFダウンロード 

- **Applications**

Drain valve operation for full automatic washing machines

- **Features**

AC driving supply (AC100~240V、50/60Hz)

Hold the position by inductor clutch

One direct rotation by one way clutch

- **Specifications**

Motor driving parts	Rated voltage	AC200/240V
	Voltage range	AC220/240±15%
	Current input	18mA(50Hz) 20mA(60Hz)
Output parts	Operating method	Wire type
	Tension	73.6N
	Operating time	7.8s or less
	Operating stroke	23mm
Operating temperature		-10 ~ 50°C

For more Details, please contact sales department